



FEATURES AND BENEFITS

IMPROVED ACCURACY AND DURABILITY

- Next generation gooseneck alignment features maintain a more accurate and repeatable tool center point
- Thick-walled aluminum armor gooseneck is highly durable and resilient in the event of a collision with other equipment

INCREASED ACCESSIBILITY

- Sleek design improves work envelope
- Compatible with TOUGH ACCESS Consumables for even greater accessibility

EASY MAINTENANCE

- QUICK LOAD Gooseneck system incorporates a hand nut mechanism – no tools required for neck replacement
- Quick-change unicables are available in 300 and 500 amps

STANDARD OFFERINGS

- TOUGH LOCK™ Contact Tip System provides the improved performance and reliability you need to maximize production and minimize downtime
- Common Consumable Platform – TOUGH GUN Semi-Automatic and Robotic MIG Guns use the same Tregaskiss™ Consumables resulting in reduced inventory
- QUICK LOAD Liner requires less than half the time and effort to replace (compared to conventional style liners)

TOUGH GUN™ G2 SERIES

AIR-COOLED ROBOTIC MIG GUNS

**NEW
PRODUCT!**

ACCESS HARD-TO-REACH WELDS WITH GREATER ACCURACY AND REPEATABILITY!

The new TOUGH GUN G2 Series from Tregaskiss takes all of your favorite TOUGH GUN features and packs them into a sleek air-cooled robotic gun design that maximizes durability, accuracy and repeatability.

With thicker aluminum armor and our next generation alignment features, our new QUICK LOAD™ Robotic Gooseneck System maintains TCP while withstanding more abuse than ever before.

Merging the clutch (or solid mount) with the connector housing has significantly increased the gun's working envelope and weld accessibility. Outfit your robotic GMAW gun with our optional TOUGH ACCESS™ Consumables to access challenging welds.

Ease of maintenance is something TOUGH GUN MIG Guns are known for, and the G2 Series is no exception. QUICK LOAD Goosenecks can be replaced easily (without tools) by using the new hand nut mechanism – simply twist clockwise to unlock the gooseneck and pull it from the gun! Unicables can also be swapped out quickly with the removal of a single fastener.

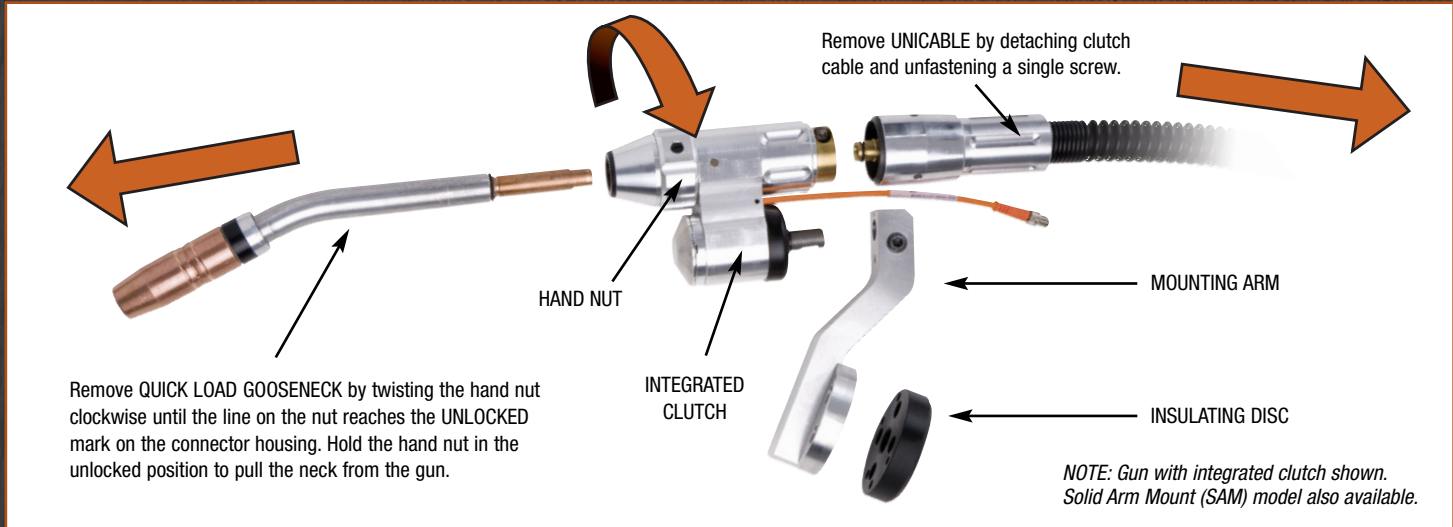
At 60% duty cycle*, the TOUGH GUN G2 Series provides 500 amps air-cooled capacity with mixed gases.

*Ratings are based on tests that comply with IEC 60974-7 standards.

Tregaskiss™

THE FREEDOM TO INNOVATE

TOUGH GUN G2 SERIES



AMPERAGE RATINGS*	
Model	60% Duty Cycle Mixed Gases
300 amp	300
500 amp	500

*Ratings are based on tests that comply with IEC 60974-7 standards.

ORDERING INFORMATION

Build a TOUGH GUN G2 Series MIG Gun to match your welding application!

STEP 1: Build your custom TOUGH GUN G2 MIG Gun using this chart. For Options 4 to 12, contact Tregaskiss Customer Service or visit Tregaskiss.com/G2

1 Class	2 Type	3 Gen	4 Amps	5 Neck	6 Option 1	7 Option 2	8 Cable Length	9 Nozzle	10 Tip Type	11 Wire Size	12 Power Pin
R	A	2									
Robotic	Air-Cooled	Generation 2									

STEP 2: Select Your Mounting Arm (sold separately). STEP 3: Select Robotic Insulating Disc (sold separately)
For STEPS 2 and 3, contact Tregaskiss Customer Service or visit Tregaskiss.com/G2



THE FREEDOM TO INNOVATE

Canada & U.S.A. Phone: 1-877-737-3111 Fax: 1-877-737-2111
International Phone: +1-519-737-3000 Fax: +1-519-737-2111

www.tregaskiss.com

Tregaskiss is an industry leader in the development and manufacture of semi-automatic and robotic MIG welding guns and robotic peripherals.

TREGASKISS™, TOUGH GUN™, TOUGH LOCK™, and other names are trademarks of Tregaskiss, a division of Illinois Tool Works Inc.

Distributed by:

11/09 B074